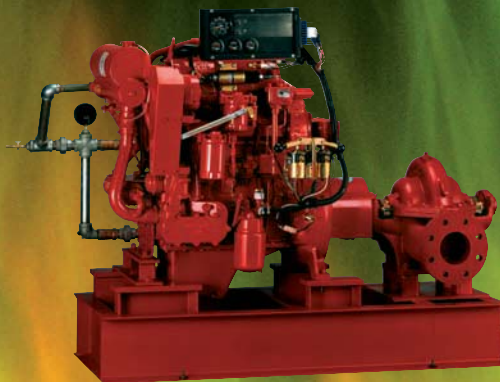
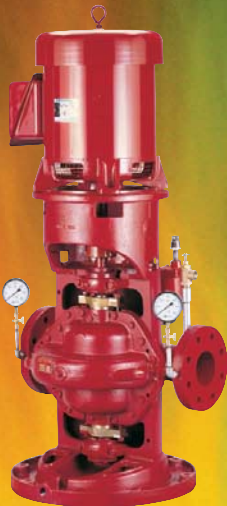
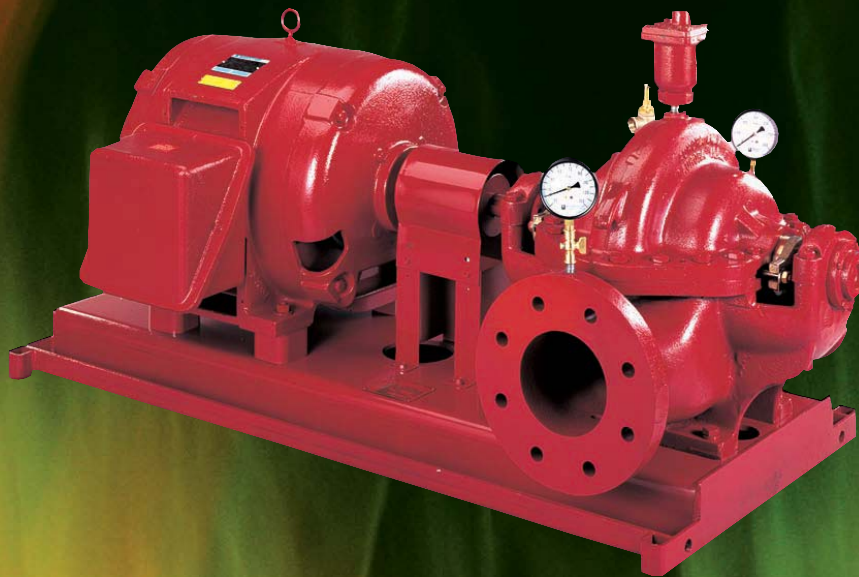
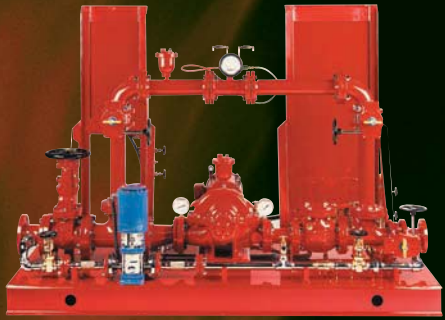


AURORA PUMP

FIRE PUMP LINE

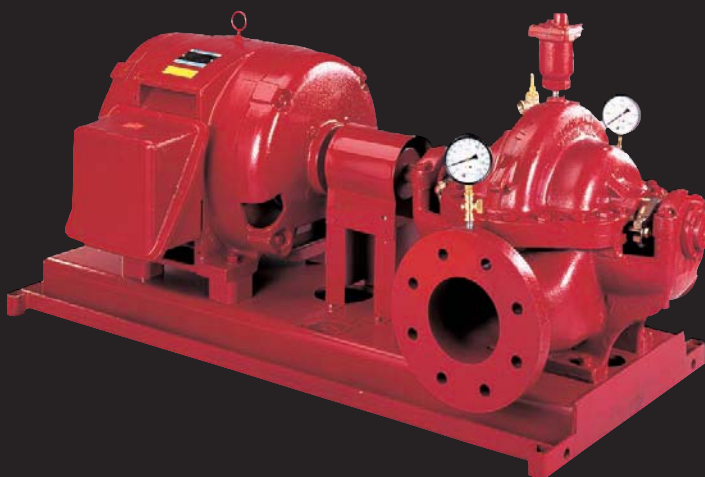




Vertical Turbine

- UL Listed/FM Approved/NFPA-20 Design
- Flows from 250 to 4500 GPM
- Pressures from 75 to 387 PSI
- For Commercial, Industrial and Marine Use
- Special Materials for Seawater Applications
- Diesel and Electric Driven

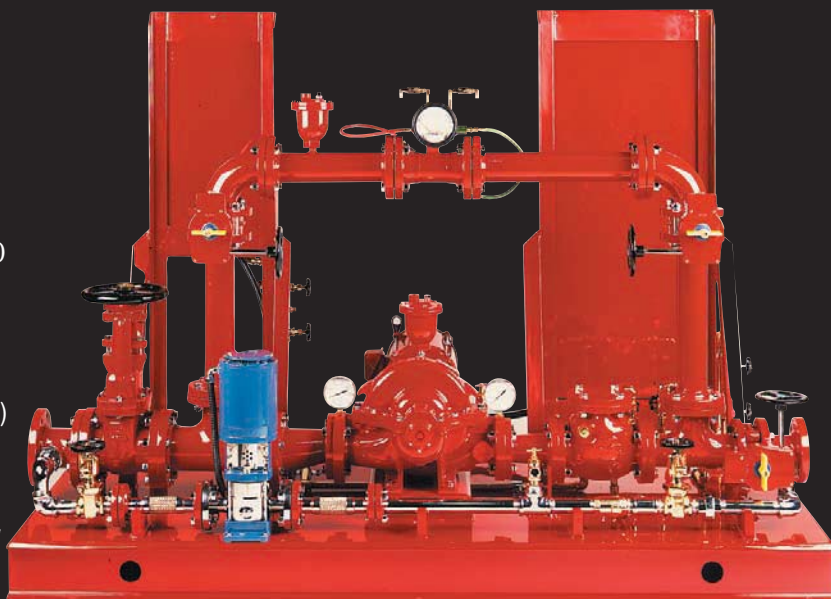
Horizontal Split Case



- UL Listed/FM Approved/NFPA-20 Design
- Flows from 250 to 5000 GPM
- Pressures from 40 to 490 PSI
- For Commercial and Industrial Use
- Diesel and Electric Driven

Packaged Fire Pump Systems

- UL Listed/FM approved Aurora fire pump
- UL Listed/FM approved fire pump controller
- ETL Listed packaged fire pump system
- Aurora jockey pump
- UL Listed jockey pump controller
- Pressure sensing lines complete per NFPA 20
- Listed OS & Y gate & butterfly valves
- Suction and discharge pressure gauges
- Automatic casing air release valve
- Casing pressure relief valve (electric packages)
- Hose header with valves, caps & chains
- Suction and discharge piping per NFPA 20
- All electrical components pre-wired at factory
- Complete system hydrostatically tested



Vertical Split Case

- UL Listed/FM Approved/NFPA-20 Design
- Flows from 50 to 750 GPM
- Pressures from 40 to 205 PSI
- For Commercial, Residential and Industrial Use
- Space Saving Design



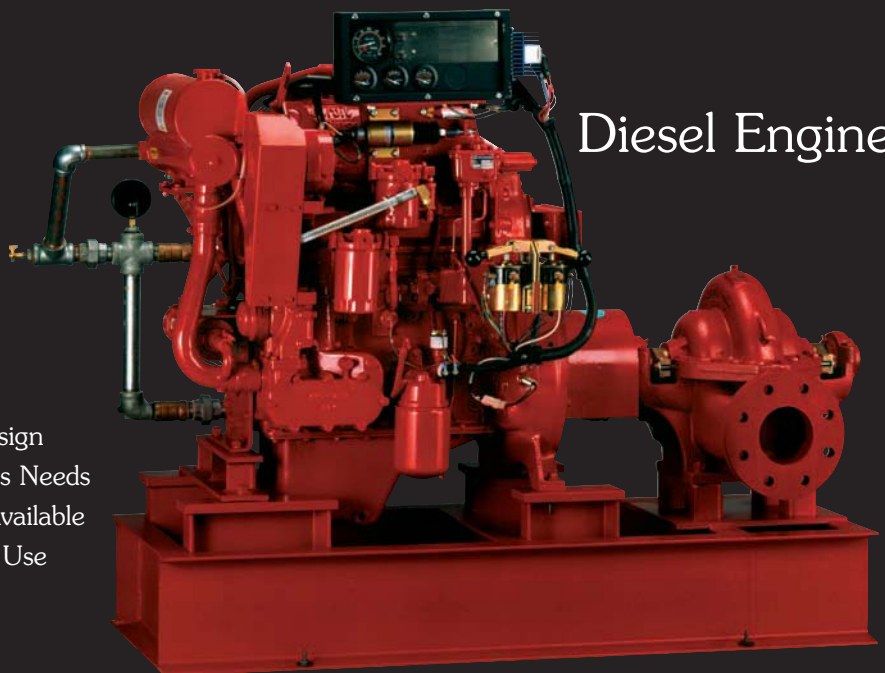
Vertical Inline



- UL Listed/FM Approved/NFPA-20 Design
- Flows from 250 to 2500 GPM
- Pressures from 40 to 200 PSI
- For Commercial and Industrial Use
- Space Saving Design

Diesel Engines

- UL Listed/FM Approved/NFPA-20 Design
- Engines are Selected for the Customer's Needs
- Fuel Tank and Other Accessories are Available
- For Commercial, Industrial and Marine Use



Fire Pump Houses

- Designed to meet specific environmental requirements
- All-steel building
- Easy access entries
- Electric heaters with built-in thermostat
- Continuous duty exhaust fan
- AC motor/solenoid operated louver
- Interior fluorescent and flood light, exterior 70 W HPS light
- Sprinkler system per NFPA
- Finished through wall or floor penetration



- Mini power zone (electric packages)
- Interior wall liner (optional)



NOTE: Aurora Pump reserves the right to make revisions to its products and their specifications, and to this bulletin and related information, without notice.

- Your Authorized Local Distributor -

AURORA PUMPS ARE



MARKETING & SALES:

800 AIRPORT ROAD • NORTH AURORA, ILLINOIS U.S.A. • 60542
PHONE: (630) 859-7000 U.S.A./CANADA FAX: (630) 859-7060
WORLDWIDE FAX: (630) 859-1226

AURORA MFG. PLANT:

800 AIRPORT ROAD • NORTH AURORA, ILLINOIS U.S.A. • 60542

SALES OFFICES IN ALL MAJOR CITIES AND COUNTRIES

Refer to "Pumps" in yellow pages of your phone directory
for your local Distributor



ap AURORA®
Pentair Water