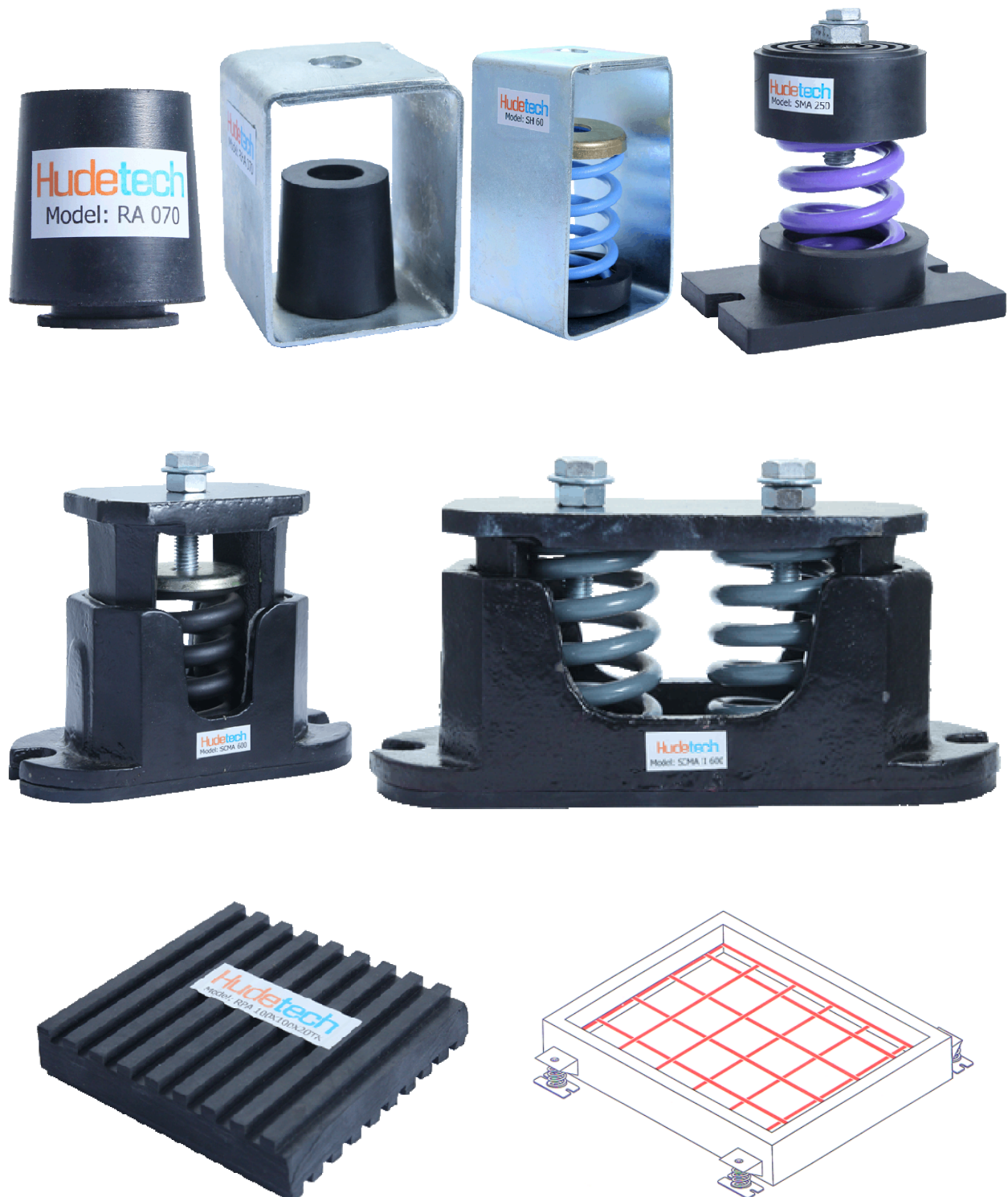
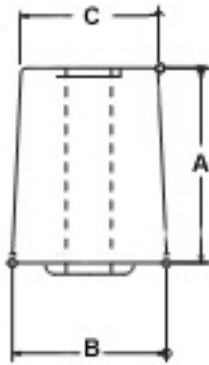


VIBRATION ISOLATION PRODUCT



RUBBER



Design feature:

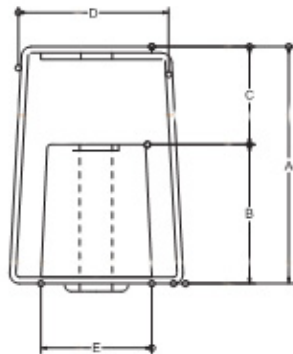
- Use neoprene element.
- Saving space installation.

Application:

- Duct, Piping, Suspended Ceiling, Fan, FCU, etc,...

Model	Capacity	Deflection	Rod size	Dimension mm		
	kgs	mm	mm	A	B	C
RA 120	71-120	6	10	40	41	55
RA 070	1-70	6	8	33	51	50
RB 120	71-120	20	10	40	41	55
RB 070	1-70	20	8	33	51	50

RUBBER HANGER



Design feature:

- Use neoprene element with steel frame.
- Saving space installation.

Application:

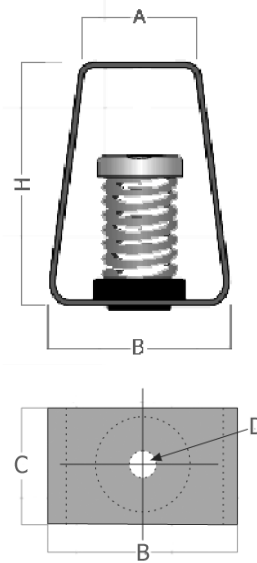
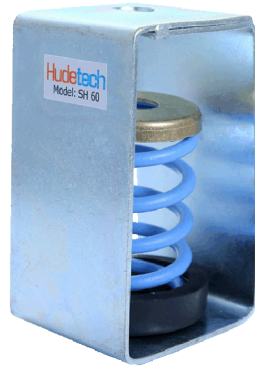
- Duct, Piping, Suspended Ceiling, Fan, FCU, etc,...

Model	Capacity	Deflection	Rod size	Dimension mm				
	kgs	mm	mm	A	B	C	D	E
RHA 120	71-120	6	10	41	40	35	55	75
RHA 070	1-70	6	8	31	33	28	50	61
RHB 120	71-120	20	10	41	40	35	55	75
RHB 070	1-70	20	8	31	33	28	50	61

Noted:

- Dimension is mentioned with 5% tolerance.
- To achieve good isolation do not overload.

SPRING HANGER



Design feature:

- High efficiency vibration from structure born vibration and noise.

Application:

- Fan, AHU, FCU, Piping, Ducting, etc,...

Feature:

- Compliance-Springs designed according to BS 1726 (Part 1): 2002

Model	Color	Capacity	Deflection	Top Hole	Dimension mm				
		kgs	mm	mm	A	B	C	D	H
SH 10	Purple	10	25	13	53	60	52	12	100
SH 15	Yellow	15	25	13	53	60	52	12	100
SH 20	Grey	20	25	13	53	60	52	12	100
SH 40	Light Blue	40	25	13	53	60	52	12	100
SH 60	Green	60	25	13	53	60	52	12	100
SH 100	Green	100	25	15	83	85	85	14	125
SH 160	Orange	160	25	15	83	85	85	14	125
SH 200	Red	200	25	15	83	85	85	14	125
SH 250	Purple	250	25	15	83	85	85	14	125
SH 300	Grey	300	25	19	102	105	95	18	165
SH 400	Orange	400	25	19	102	105	95	18	165
SH 500	Brown	500	25	19	102	105	95	18	165
SH 600	Black	600	25	19	102	105	95	18	165
SH 800	Red	800	25	19	102	105	95	18	165
SH 1050	White	1050	25	19	102	105	95	18	165
SH 1250	Green	1250	25	19	102	105	95	18	165

Noted:

- Dimension is mentioned with 5% tolerance.
- To achieve good isolation do not overload.

CUP SPRING MOUNT - TYPE A



Design feature:

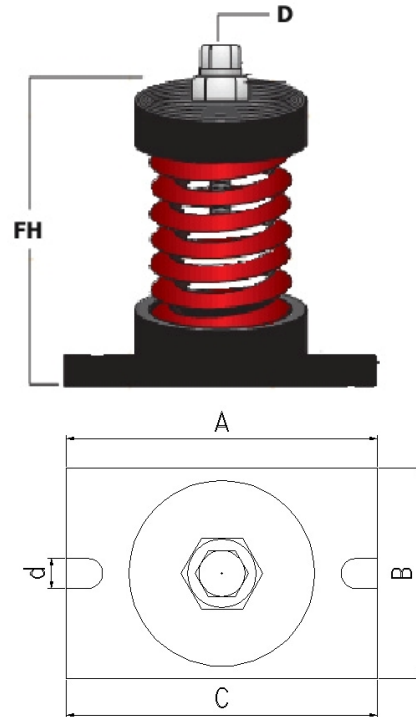
- Laterally stable springs
- Non-Skid bolt down base.
- Plated leveling/lock bolt.

Application:

- AHU, Pump, Centrifugal and Axial Fan, Inertia Base, Internal Combustion Engines, etc,...

Feature:

- Compliance-Springs designed according to BS 1726 (Part 1): 2002

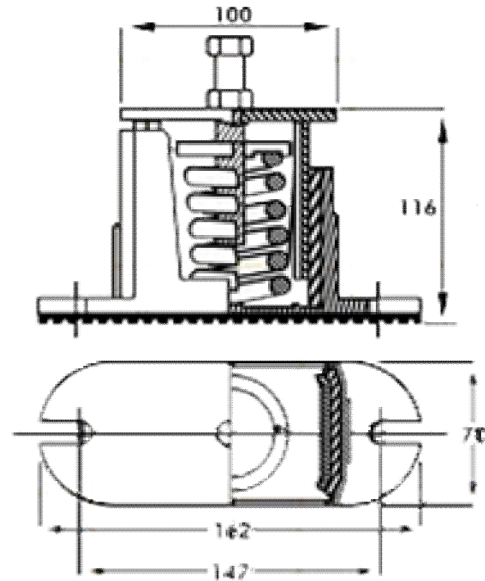


Model	Color	Capacity	Deflection	Dimension mm					
		kgs	mm	A	B	C	D	d	FH
SMA 015	Yellow	15	25	110	75	90	M8	M8	100
SMA 030	Yellow	30	25	110	75	90	M8	M8	100
SMA 060	Blue	60	25	110	75	90	M8	M8	100
SMA 100	Green	100	25	110	75	90	M8	M8	100
SMA 160	Orange	160	25	110	75	90	M8	M8	100
SMA 200	Reed	200	25	110	75	90	M8	M8	100
SMA 250	Purple	250	25	110	75	90	M8	M8	100
SMA 300	Grey	300	25	140	100	115	M10	M10	132
SMA 400	Orange	400	25	140	100	115	M10	M10	132
SMA 500	Brown	500	25	140	100	115	M10	M10	132
SMA 600	Black	600	25	140	100	115	M10	M10	132
SMA 800	Red	800	25	140	100	115	M10	M10	132
SMA 1050	White	1050	25	140	100	115	M10	M10	132
SMA 1250	Green	1250	25	140	100	115	M10	M10	132

Noted:

- Dimension is mentioned with 5% tolerance.
- To achieve good isolation do not overload.

CASED SPRING MOUNT - TYPE A



Design feature:

- High efficiency vibration with spring and acoustic Friction pad.

Application:

- Chiller, Pump, Fan, Condensing Unit, Rooftop Package Unit, Compressor, Generator, etc,...

Feature:

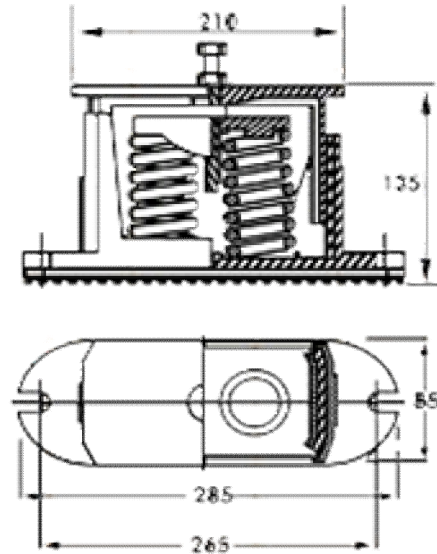
- Compliance-Springs designed according to BS 1726 (Part 1): 2002

Model	Color	Capacity	Deflection	Dimension mm				
		kgs	mm	A	B	L	PCD	FH
SMCA 030	Orange	30	25	100	70	147	162	116
SMCA 060	Blue	60	25	100	70	147	162	116
SMCA 100	Green	100	25	100	70	147	162	116
SMCA 160	Orange	160	25	100	70	147	162	116
SMCA 200	Red	200	25	100	70	147	162	116
SMCA 250	Purple	250	25	100	70	147	162	116
SMCA 300	Grey	300	25	127	85	180	200	130
SMCA 400	Orange	400	25	127	85	180	200	130
SMCA 500	Brown	500	25	127	85	180	200	130
SMCA 600	Black	600	25	127	85	180	200	130
SMCA 800	Red	800	25	127	85	180	200	130
SMCA 1050	White	1050	25	127	85	180	200	130
SMCA 1250	Green	1250	25	127	85	180	200	130

Noted:

- Dimension is mentioned with 5% tolerance.
- To achieve good isolation do not overload.

CASED SPRING MOUNT - TYPE A



Design feature:

- High efficiency vibration with spring and acoustic Friction pad.

Application:

- Chiller, Pump, Fan, Condensing Unit, Rooftop Package Unit, Compressor, DG Set, etc,...

Feature:

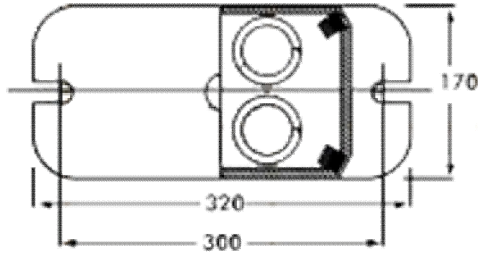
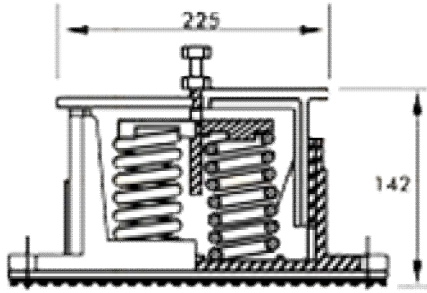
- Compliance-Springs designed according to BS 1726 (Part 1): 2002

Model	Color	Capacity	Deflection	Dimension mm				
		kgs	mm	A	B	L	PCD	FH
SMCA II 600	Grey	600	25	210	85	265	285	135
SMCA II 800	Orange	800	25	210	85	265	285	135
SMCA II 1000	Brown	1000	25	210	85	265	285	135
SMCA II 1200	Black	1200	25	210	85	265	285	135
SMCA II 1600	Red	1600	25	210	85	265	285	135
SMCA II 2100	White	2100	25	210	85	265	285	135
SMCA II 2500	Green	2500	25	210	85	265	285	135

Noted:

- Dimension is mentioned with 5% tolerance.
- To achieve good isolation do not overload.

CASED SPRING MOUNT - TYPE A



Design feature:

- High efficiency vibration with spring and acoustic Friction pad.

Application:

- Chiller, Pump, Fan, Condensing Unit, Rooftop Package Unit, Compressor, DG Set, etc,...

Feature:

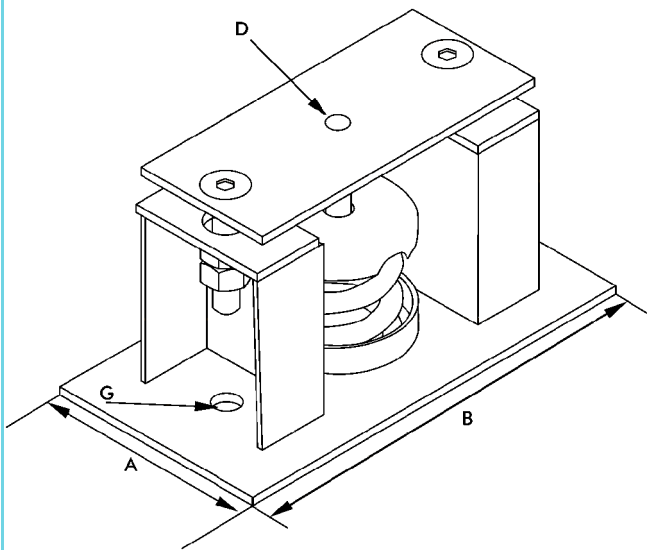
- Compliance-Springs designed according to BS 1726 (Part 1): 2002

Model	Color	Capacity	Deflection	Dimension mm				
		kgs	mm	A	B	L	PCD	FH
SMCA IV 1200	Grey	1200	25	225	170	300	320	142
SMCA IV 1600	Orange	1600	25	225	170	300	320	142
SMCA IV 2000	Black	2000	25	225	170	300	320	142
SMCA IV 2400	Red	2400	25	225	170	300	320	142
SMCA IV 3200	White	3200	25	225	170	300	320	142
SMCA IV 4200	Green	4200	25	225	170	300	320	142

Noted:

- Dimension is mentioned with 5% tolerance.
- To achieve good isolation do not overload.

RESTRAINED SPRING ISOLATOR



Design feature:

- Free-standing mount.
- Limited vertical movement.

Application:

- Chiller, Generator, Cooling Tower, etc,...

Feature:

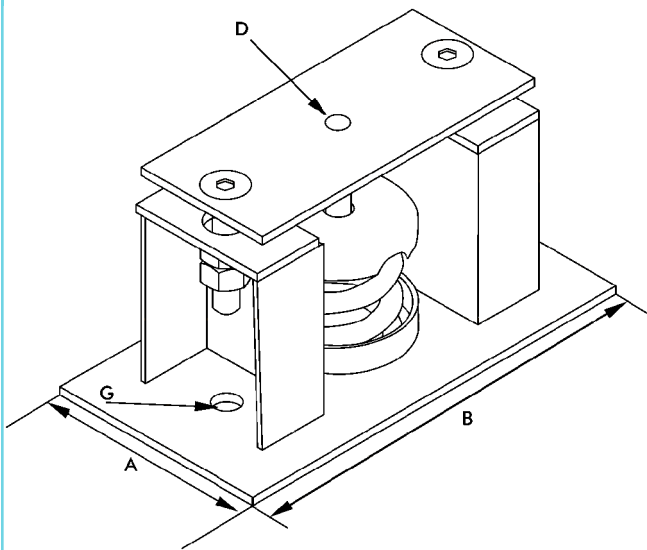
- Compliance-Springs designed according to BS 1726 (Part 1): 2002

Type	Model	Color	Capacity	Deflection	Dimension mm			
			kgs	mm	A	B	D	G
SINGLE SPRING	RSI 200	Red	200	25	100	200	14	16
	RSI 250	Purple	250	25	100	200	14	16
	RSI 300	Grey	300	25	100	200	14	16
	RSI 400	Orange	400	25	100	200	14	16
	RSI 500	Brown	500	25	100	200	14	16
	RSI 600	Black	600	25	100	200	14	16
	RSI 800	Red	800	25	100	200	14	16
	RSI 1050	White	1050	25	100	200	14	16
DOUBLE SPRING	RSI II 400	Red	200	25	150	300	18	18
	RSI II 500	Purple	250	25	150	300	18	18
	RSI II 600	Grey	300	25	150	300	18	18
	RSI II 800	Orange	400	25	150	300	18	18
	RSI II 1000	Brown	500	25	150	300	18	18
	RSI II 1200	Black	600	25	150	300	18	18
	RSI II 1600	Red	800	25	150	300	18	18
	RSI II 2100	White	1050	25	150	300	18	18

Noted:

- Dimension is mentioned with 5% tolerance.
- To achieve good isolation do not overload.

RESTRAINED SPRING ISOLATOR



Design feature:

- Free-standing mount.
- Limited vertical movement.

Application:

- Chiller, Generator, Cooling Tower, etc,...

Feature:

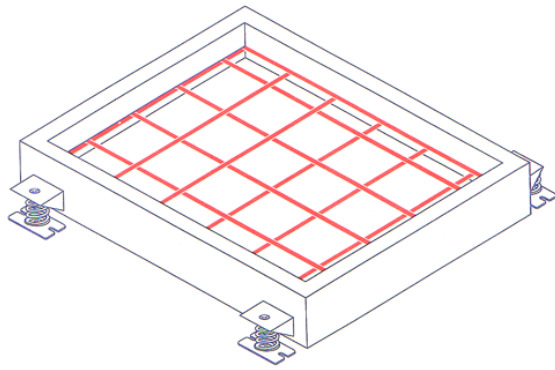
- Compliance-Springs designed according to BS 1726 (Part 1): 2002

Type	Model	Color	Capacity	Deflection	Dimension mm			
			kgs	mm	A	B	D	G
FOUR SPRING	RSI IV 400	Red	400	25	225	300	18	18
	RSI IV 1000	Purple	1000	25	225	300	18	18
	RSI IV 1200	Grey	1200	25	225	300	18	18
	RSI IV 1600	Orange	1600	25	225	300	18	18
	RSI IV 2000	Brown	2000	25	225	300	18	18
	RSI IV 2400	Black	2400	25	225	300	18	18
	RSI IV 3200	Red	3200	25	225	300	18	18
	RSI IV 4200	White	4200	25	225	300	18	18
SIX SPRING	RSI VI 1200	Red	1200	25	250	350	18	18
	RSI VI 1500	Purple	1500	25	250	350	18	18
	RSI VI 1800	Grey	1800	25	250	350	18	18
	RSI VI 2400	Orange	2400	25	250	350	18	18
	RSI VI 3000	Brown	3000	25	250	350	18	18
	RSI VI 3600	Black	3600	25	250	350	18	18
	RSI VI 4800	Red	4800	25	250	350	18	18
	RSI VI 6200	White	6200	25	250	350	18	18

Noted:

- Dimension is mentioned with 5% tolerance.
- To achieve good isolation do not overload.

INERTIA BASE



Design feature:

- Construction included frame steel and concrete plinth.
- Mounting selection base on 4 or 6 mount points

Application:

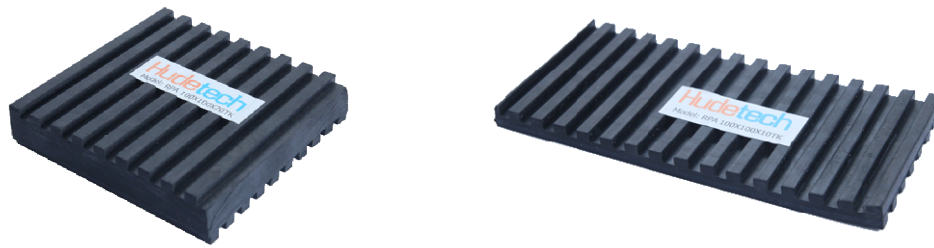
- Pump, Generator, large centrifugal fan, industrial washing machine, rotating mechanical equipment, etc,...

Model	Thickness	Dimension mm			
	mm	Wide	Length	Height	Mount Point
IB 150	150	Customizer	Customizer	150	4/6
IB 200	200	Customizer	Customizer	200	4/6
IB 300	300	Customizer	Customizer	300	4/6
IB 400	400	Customizer	Customizer	400	4/6
IB 500	500	Customizer	Customizer	500	4/6

Noted:

- Dimension is mentioned with 5% tolerance.
- To achieve good isolation do not overload.

RUBBER PAD - TYPE A



Design feature:

- Alternate high/low ribbed construction
- Easy to cut pad.

Application:

- AHU, chiller, Cooling Tower, Generator, Compressor, etc...

Model	Capacity	Deflection	Dimension mm		
	Kg/cm ²	mm	A	B	H
RPA 100X100X10	1.08	3	100	100	10
RPA 200X200X10	1.08	3	200	200	10
RPA 300X300X10	1.08	3	300	300	10
RPA 400X400X10	1.08	3	400	400	10
RPA 500X500X10	1.08	3	500	500	10
RPA 600X600X10	1.08	3	600	600	10
RPA 100X100X20	9.91	6	100	100	20
RPA 200X200X20	9.91	6	200	200	20
RPA 300X300X20	9.91	6	300	300	20
RPA 400X400X20	9.91	6	400	400	20
RPA 500X500X20	9.91	6	500	500	20
RPA 600X600X20	9.91	6	600	600	20
RPA 600X600X40	12.83	10	600	600	40
RPA 600X600X50	15.52	12	600	600	50
RPA 600X600X60	20.73	15	600	600	60

Noted:

- Dimension is mentioned with 5% tolerance.
- To achieve good isolation do not overload.

RUBBER PAD - TYPE B



Design feature:

- Alternate high/low ribbed construction
- Constructed of a steel plate bonded between Ribbed Anti Vibration Pad.

Application:

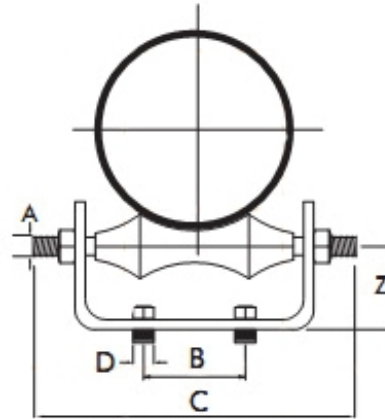
- AHU, chiller, Cooling Tower, Generator, Compressor, etc...

Model	Capacity	Deflection	Dimension mm		
	Kg/cm2	mm	A	B	H
RPB 100X100X20	2.16	6	100	100	20
RPB 200X200X20	2.16	6	200	200	20
RPB 300X300X20	2.16	6	300	300	20
RPB 400X400X20	2.16	6	400	400	20
RPB 500X500X20	2.16	6	500	500	20
RPB 600X600X20	2.16	6	600	600	20
RPB 600X600X40	19.82	12	600	600	40
RPB 600X600X60	19.82	18	600	600	60

Noted:

- Dimension is mentioned with 5% tolerance.
- To achieve good isolation do not overload.

ROLLER CHAIR



Design feature:

- Roller– Cast: iron/Carbon Steel
- Chair: Carbon Steel with zinc coast.
- Tie: Carbon Steel with MS Nut & Bolt

Application:

- Support to pipes where axial movements are allowed , vertical adjustments are required

Feature:

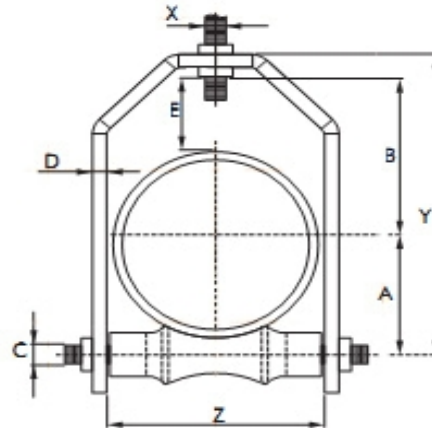
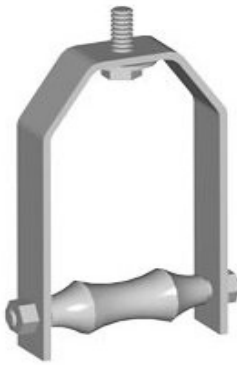
- Designed according to MSS SP-69

Model	Size	Dimension mm						Maz. Recom Load Kg
		A	B	C	D	Frame Size	Z	
RLC 060	2"	12	35	110	12	6x32	40	350
RLC 075	2 1/2"	12	35	110	12	6x32	40	350
RLC 090	3"	12	50	145	12	6x32	45	350
RLC 100	3 1/2"	12	50	145	12	6x32	45	500
RLC 115	4"	12	50	180	16	8x40	50	500
RLC 140	5"	12	75	215	16	8x40	55	500
RLC 168	6"	19	80	250	19	8x40	60	500
RLC 220	8"	22	85	285	19	10x50	75	1200
RLC 273	10"	22	130	345	19	10x50	90	1200
RLC 323	12"	25	140	395	25	12x50	105	1500
RLC 355	14"	25	165	440	25	12x50	120	1500
RLC 406	16"	32	210	480	25	12x75	140	3500
RLC 457	18"	32	235	525	25	12x75	155	3500
RLC 508	20"	50	260	555	25	12x75	165	3500
RLC 610	24"	50	310	665	25	16x100	200	3500

Noted:

- Dimension is mentioned with 5% tolerance.
- To achieve good isolation do not overload.

ROLLER CHAIR HANGER



Design feature:

- Roller- Cast: iron/Carbon Steel
- Chair: Carbon Steel with zinc coast.
- Tie: Carbon Steel with MS Nut & Bolt

Application:

- Support to pipes where axial movements are allowed , vertical adjustments are required

Feature:

- Designed according to MSS SP-69

Model	Size	Dimension mm							Maz. Recom Load Kg
		A	B	Bracket Size	E	X	Y	Z	
RLH 035	1"	28	43	3x25	32	10	90	46	100
RLH 042	1 1/4"	33	46	3x25	32	10	96	47	100
RLH 048	1 2/2"	38	50	3x25	32	10	107	62	100
RLH 060	2"	41	57	3x25	32	10	122	64	125
RLH 075	2 1/2"	50	74	3x25	44	12	148	92	150
RLH 090	3"	56	81	6x32	44	12	161	94	150
RLH 100	3 1/2"	65	88	6x32	45	12	180	110	190
RLH 115	4"	69	93	6x40	46	12	192	122	250
RLH 140	5"	88	114	6x50	50	12	233	152	300
RLH 168	6"	102	125	6x50	50	19	260	180	300
RLH 220	8"	131	152	10x65	50	22	326	230	475
RLH 273	10"	161	178	10x65	50	22	381	285	475
RLH 323	12"	192	208	12x65	55	22	440	335	550
RLH 355	14"	212	221	12x65	55	25	478	372	550
RLH 406	16"	233	247	12x65	55	25	524	421	585
RLH 457	18"	267	283	12x65	65	25	590	474	675
RLH 508	20"	300	305	16x75	65	32	664	522	725
RLH 610	24"	351	367	16x100	75	32	788	630	975

Noted:

- Dimension is mentioned with 5% tolerance.
- To achieve good isolation do not overload.

AUTHORIZED DISTRIBUTOR:
KHAI THINH FROZEN EQUIPMENT COMPANY LIMITED
Website: www.khaithinhree.com
Email: info@khaithinhree.com
Tel: (848) 6658 8899