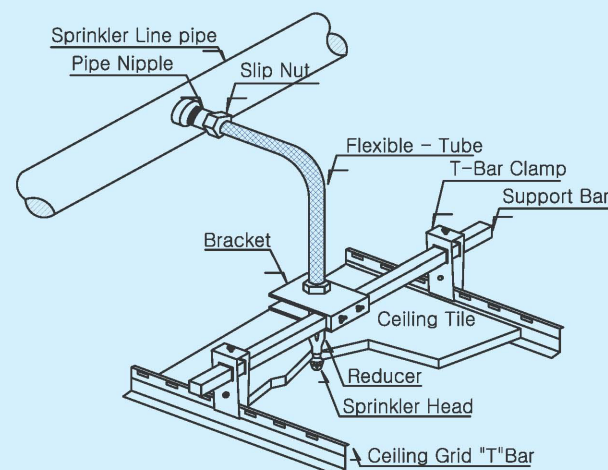
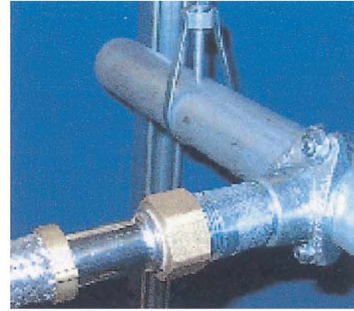


INSTALLATION INSTRUCTION

1. Determine the place where the sprinkler head will be located. The standard bar is 700 mm (28 inch) long and shall be mounted on the 600 mm (24 inch) ceiling grid. The sprinkler should be located as close as possible to the center of the distance between ceiling grids.
2. Slide reducer bracket onto the cross support bar. Loosely attach the reducer bracket and two clamps on the support bar and place clamps onto ceiling grid so that the support bar crosses the location where the sprinkler will be located.
3. Separate nipple (if necessary) from the flexible hose and attach the nipple onto the branch line. Make sure that the arrow is in the appropriate direction of flow to the sprinkler and to use pipe thread sealant at the connection to the branch line. Attach one end of the flexible hose on to the nipple and tighten the slip nut to maximum torque of 25 ft-lb. Do not twist the flexible hose.
4. Bend the flexible hose into a curve that locates the sprinkler reducer at the other end of the flexible hose in the area where the sprinkler will be located. The tube arc should not be twisted and arc should be as large and smooth as possible. The minimum bending radius is 3 inch (76 mm).
5. Insert the sprinkler reducer into bracket. Locate the reducer bracket and sprinkler reducer where the sprinkler will be, and loosely tighten the butterfly bolts on the bracket.
6. Attach the sprinkler to the sprinkler reducer. Put wrench on the sprinkler reducer to counteract the tightening torque and prevent the flexible hose from twisting. Reference the sprinkler manufacturer's sprinkler data sheet for appropriate sprinkler tightening torque, sprinkler wrench and other guidance.
7. Verify that the sprinkler reducer is seated in the reducer bracket, precisely locate the sprinkler in all three axis in accordance with the sprinkler manufacturer's data sheet. Tighten all butterfly bolts and hex bolt on clamps and bracket. The torque requirements for butterfly bolts are minimum 40 in-lb and maximum 50 in-lb. Torque for hex nut is 20 in-lb.
8. After tightening all the bolts, verify that the sprinkler is properly located in accordance with the manufacturer's instruction. If not, loosen the butterfly bolts and readjust as required.



FLEX DROP®

- ▶ FAST & EASY INSTALLATION
- ▶ SAVINGS IN TIME & MONEY
- ▶ PROVEN SAFETY
- ▶ FM APPROVED, UL 2443 LISTED



Toan Cau Building Materials Company



Tel : (848) 39 956 957
Fax : (848) 39 956 897
Email : toancau@tcbm.vn
Web : www.tcbm.vn



FLEX DROP

Flex Drop is a unique sprinkler drop assembly comprised of the followings : adapter nipple, stainless steel flexible hose, sprinkler reducer and light weight ceiling mounting parts. Flex Drop can be installed easily without machines and power tools in all standard ceilings. Flex Drop makes it possible to test and charge the systems with water before the ceiling is in position, the Flex Drop hoses can be reshaped to suit the final sprinkler location without draining the system.

We are a leading manufacturer of flexible sprinkler hose for more than 25 years and exporting Flex Drop to Europe, Asia, Middle East, Australia and USA. Tyco Building Supply is our distributor for all European Countries and we have distributors in all major countries around the world.

Our Flex Drop were installed in the tallest building of the world, Taipei 101 tower, airports and subways in Singapore, Korea, Australia and major building projects, hospitals, shopping centers, government buildings around the world.

Flex Drop is listed by new UL 2443 and approved by FM. Flex Drop also holds approvals from VDS in Germany, LPCB in U.K and SSL in Australia.

We also make flexible sprinkler systems for exhaust ducts and clean rooms. All of our products for clean rooms and industrial ducts are approved by FM and widely used to protect semi conductor factories and other high technology facilities in Korea, Singapore and other countries.

BENEFITS

Economy : Savings in labor cost, no need of equipment, machines and power tools.

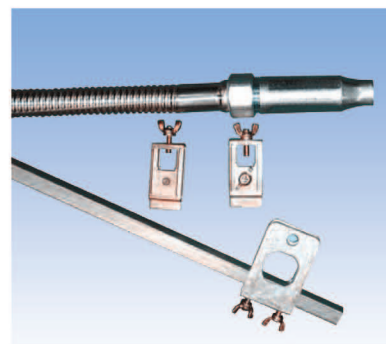
Time Savings : 4 times faster compared to traditional hard pipe installation

Safety : Less risk of water damage (once water is charged in rough-in stage, no drain is necessary). No fumes, smokes, noise and accidents from machines.

Convenience : Eliminates work inconvenience. Easier to bend and maneuver in congested ceiling space and adjustment can be made easily.

Reusable and construction advantage : Flex Drop system can be re-installed in another area if the system needs to be dismantled. Adjustments can be made to ceiling levels after installation without impacting sprinklers and drops as well.

FLEX DROP COMPONENTS



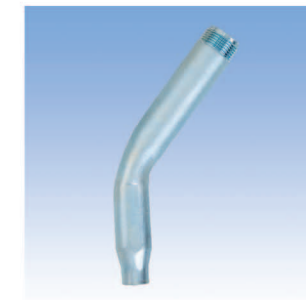
COMPONENTS



UNBRAIDED



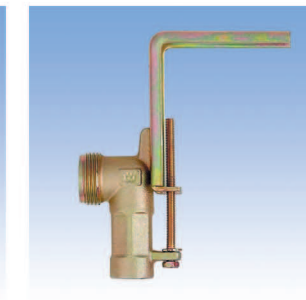
BRAIDED



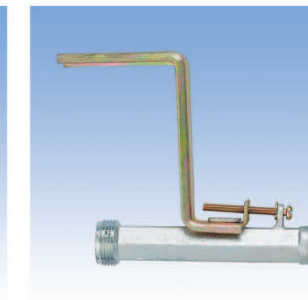
45° Degree Reducer
RBAR 45



90° Degree Reducer
RBAR 90



Small 90° Reducer
with Bracket
RBAR 90S



Side Wall Reducer
with Bracket
RSWR

FLEX DROP SPECIFICATION

MODEL : YN25-700 (28"), YN25-1000 (40"), YN25-1200 (47"), YN25-1500 (59"), YN25-1800 (71")
YB25-700 (28"), YB25-1000 (40"), YB25-1200 (47"), YB25-1500 (59"), YB25-1800 (71")
YB28-700 (28"), YB28-1000 (40"), YB28-1200 (47"), YB28-1500 (59"), YB28-1800 (71")
YN25 Model : Non-braided Flex Drop, UL Listed
YB25 & YB28 Model: Stainless steel braided Flex Drop, UL listed & FM approved

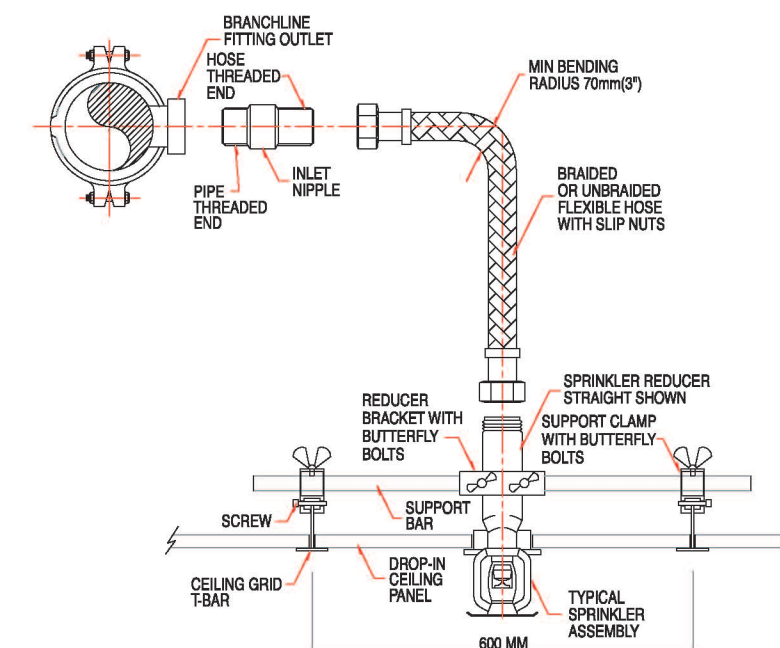
Inlet Connection : DN 25 Male BSP or NPT Thread

Outlet Connection : $\frac{1}{2}$ " or $\frac{3}{4}$ " Female NPT Thread

Internal Diameter : 25 MM for YN25 and YB25 Model, 28 MM for YB28 Model

Rated Pressure : 200 PSI (13.8 Bar) Maximum Temperature : 300 °F (149 °C)

Minimum Bending Radius : 3 Inch (76 MM)



Model	Inlet & Outlet Size	Length MM (Inch)	Number of 90 Degree Bends	Maximum Equivalent Length of SCH 40 Pipe , Feet
YN25 & YB25	1" X $\frac{1}{2}$ "	700MM (28")	2	22
YN25 & YB25	1" X $\frac{1}{2}$ "	1000MM (40")	2	32
YN25 & YB25	1" X $\frac{1}{2}$ "	1200MM (47")	2	41
YN25 & YB25	1 X $\frac{1}{2}$ "	1500MM (59")	2	49
YN25 & YB25	1 X $\frac{1}{2}$ "	1800MM (71")	3	67
YB28	1 X $\frac{1}{2}$ "	700MM (28")	2	10
YB28	1 X $\frac{1}{2}$ "	1000MM (40")	2	16
YB28	1 X $\frac{1}{2}$ "	1200MM (47")	2	20
YB28	1 X $\frac{1}{2}$ "	1500MM (59")	2	23
YB28	1 X $\frac{1}{2}$ "	1800MM (71")	3	32