

Table 11. Dimensions of PN 16 Flanges (See figure 8).

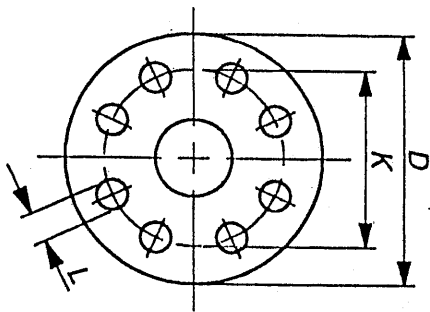
Nominal size	Mating dimensions				Outside diameter of neck	Bore diameters			Flange thickness				Chamfer	Collar thickness	Diameter of shoulder	Lengths			Neck diameters			Radius		Neck thickness	Nominal size	
	Outside diameter	Diameter of bolt circle	Diameter of bolt hole	Boiling		Boiling	C1	C2	C3	C4	E	F				G	H1	H2	H3	N1	N2	N3	R			S
DN	D	K	L	Num-ber	Size	A	B1	B2	B3	C1	C2	C3	C4	E	F	G	H1	H2	H3	N1	N2	N3	R	S	DN	
Codes affected	101, 102, 104, 105, 111, 112, 113, 121					111, 121 134	101 112 132	102	104	101 102 104	111 112 113	121	105	102 104	132 134	105	112 113	111 134	111 134	111 134	111 113 134	112 113	121	111 112 113 121	111 134	
	mm	mm	mm		mm	mm	mm	mm	mm	mm	mm	mm	mm	mm	mm	mm	mm	mm	mm	mm	mm	mm	mm	mm	mm	
	10	90	60	14	4	M12	17.2	18.0	21	31	14	14	14	3	12	—	20	35	6	28	30	28	3	1.8	10	
	15	95	65	14	4	M12	21.3	22.0	25	35	14	14	14	3	12	—	20	35	6	32	35	32	3	2.0	15	
	20	105	75	14	4	M12	26.9	27.5	31	42	16	16	16	4	14	—	24	38	6	39	45	40	4	2.3	20	
	25	115	85	14	4	M12	33.7	34.5	38	49	16	16	16	4	14	—	24	38	6	46	52	50	4	2.6	25	
	32	140	100	18	4	M16	42.4	43.5	47	59	18	16	16	5	14	—	26	40	6	56	60	60	5	2.6	32	
	40	150	110	18	4	M16	48.3	49.5	53	67	18	16	16	5	14	—	26	42	7	64	70	70	5	2.6	40	
	50	165	125	18	4	M16	60.3	61.5	65	77	20	18	18	5	16	—	28	45	8	74	84	84	5	2.9	50	
	65	185	145	18	4	M16	76.1	77.5	81	96	20	18	18	6	16	—	32	45	10	92	104	104	6	2.9	65	
	80	200	160	18	8	M16	88.9	90.5	94	114	20	20	20	6	16	—	34	50	10	110	118	120	6	3.2	80	
	100	220	180	18	8	M16	114.3	116.0	120	134	22	20	20	6	18	—	40	52	12	130	140	140	6	3.6	100	
	125	250	210	18	8	M16	139.7	141.5	145	162	22	22	22	6	18	—	44	55	12	158	168	170	6	4.0	125	
	150	285	240	22	8	M20	168.3	170.5	174	188	24	22	22	6	20	—	44	55	12	184	195	190	8	4.5	150	
	200	340	295	22	12	M20	219.1	221.5	226	240	26	24	24	6	20	—	46	62	16	234	246	246	8	5.6	200	
	250	405	355	26	12	M24	273.0	276.5	281	294	29	26	26	8	22	—	46	70	16	288	298	296	10	6.3	250	
	300	460	410	26	12	M24	323.9	327.5	333	348	32	28	28	8	24	—	46	78	16	342	350	350	10	7.1	300	
	350	520	470	26	16	M24	355.6	359.0	365	400	35	30	30	8	26	—	57	82	16	390	400	410	10	8.0	350	
	400	580	525	30	16	M27	406.4	411.0	416	454	38	32	32	8	28	—	63	85	16	444	456	458	10	8.0	400	
	450	640	585	30	20	M27	457.0	462.0	467	500	42	34	34	8	30	—	68	87	16	490	502	516	12	8.0	450	
500	715	650	33	20	M30	508.0	513.5	510	556	46	34	36	8	32	—	73	90	16	546	559	576	12	8.0	500		
600	840	770	36	20	M33	610.0	616.5	622	660	52	36	36	44	8	32	—	83	95	18	650	658	690	12	8.8	600	
700	910	840	36	24	M33	711.0	—	—	—	60*	36	42	44	—	—	—	83	100	18	750	760	760	12	8.8	700	
800	1025	950	39	24	M36	813.0	—	—	—	68*	38	42	52	—	—	—	90	105	20	848	864	862	12	10.0	800	
900	1125	1050	39	28	M36	914.0	—	—	—	76*	40	44	58	—	—	—	94	110	20	948	968	962	12	10.0	900	
1000	1255	1170	42	28	M39	1016.0	—	—	—	84*	42	46	64	—	—	—	100	120	22	1056	1072	1076	12	10.0	1000	
1200	1485	1390	48	32	M45	1220.0	—	—	—	98*	48	52	76	—	—	—	—	—	—	—	—	—	—	—	—	
1400	1685	1590	48	36	M45	1420.0	—	—	—	—	52	58	—	—	—	—	—	—	—	—	—	—	—	—	—	
1600	1930	1820	56	40	M52	1620.0	—	—	—	—	58	64	—	—	—	—	—	—	—	—	—	—	—	—	—	
1800	2130	2020	56	44	M52	1820.0	—	—	—	—	62	68	—	—	—	—	—	—	—	—	—	—	—	—	—	
2000	2345	2230	62	48	M56	2020.0	—	—	—	—	66	70	—	—	—	—	—	—	—	—	—	—	—	—	—	

*For code 101 flanges only.

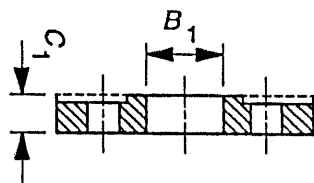
†Flanges of nominal size DN 65 can be supplied with 8 bolt holes upon special request by the purchaser.

NOTE 1. For facing dimensions see table 7.

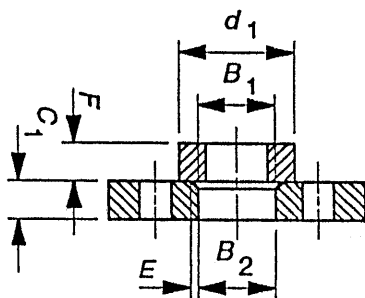
NOTE 2. See notes following table 13.



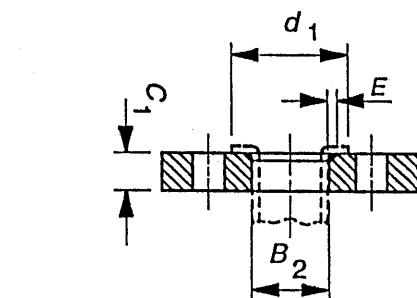
This diagram illustrates the arrangement but not necessarily the correct number of bolt holes. Refer to the column 'Bolting number' in table 11 for the actual number.



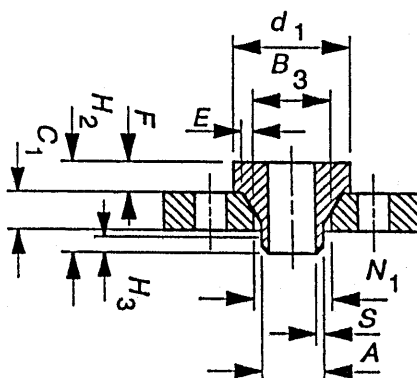
Code 101



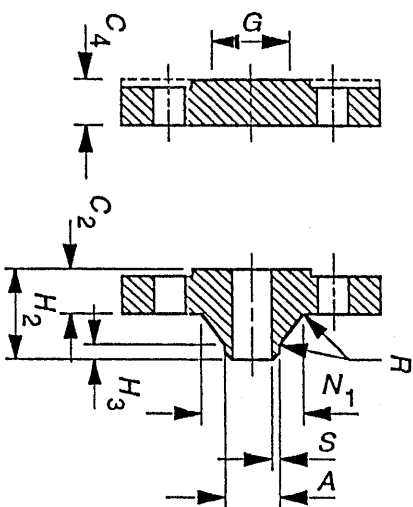
Code 102
and code 132



Code 102
and code 133

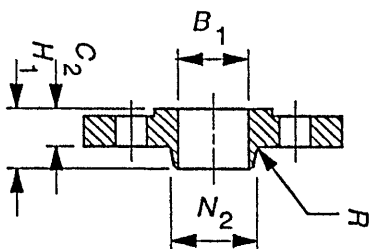


Code 104
and code 134

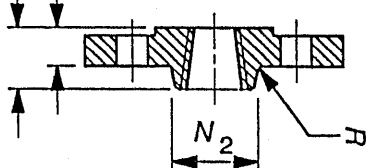


Code 105

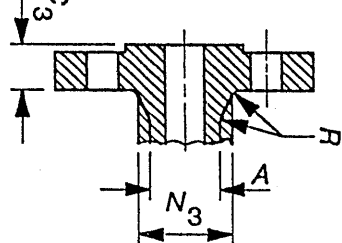
Code 111



Code 112



Code 113



Code 121

NOTE 1. Dimensions N_1 , N_2 and N_3 are measured at the intersection of the projections of the hub draft angle and the back face of the flange.

NOTE 2. For dimension d_1 , see table 7.

NOTE 3. Diameter of shoulder G refers to an unmachined centre portion of the flange (see note 4 to 8.1).

Figure 8. Dimensions of PN 16 flanges (See table 11).