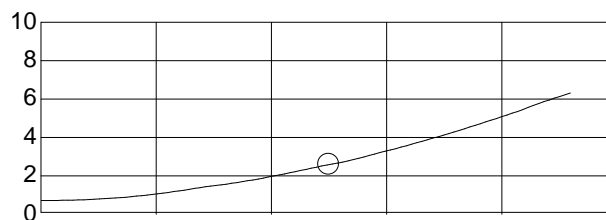
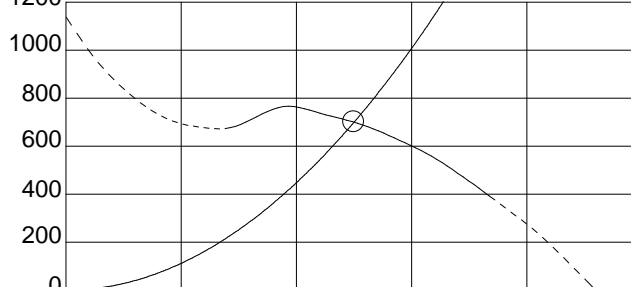


Fan Type	DIDW Forward Curved
Unit	FDA225/CM (CLI)
Operating Conditions	Ducted
Air Volume	5000 m3/h
Static Pressure	700 Pa
Velocity Pressure	166 Pa
Total Pressure	866 Pa
Outlet Velocity	16.73 m/s
Fan Total Efficiency	46.5 %
Fan Static Efficiency	37.6 %
Fan Speed	2103 rpm
Air Temperature	20.0 °C
Altitude	0 m
Fan Absorbed Power	2.58 kW
Recommended Motor	D100L (3.00 kW)
Motor Speed	-
Service Factor	0 %
Plenum Size	-
Outlet Size	-
Rec. Airflow Variation	-
Fan Pulley / Bush / Shaft	-
Motor Pulley / Bush / Shaft	-
Belt Length	-
Number of Belts / f	-
Static Belt Tension/Belt	-
Belt Deflection	-
Belt Speed (<40m/s)	-
Bearing Life (L10 / L50)	-
Starting Torque	-
Operating Limits	
Max. Absorbed Power	3.00 kW
Max. Fan Speed	2900 rpm
Temperature (Min-Max)	-20° to +85°C

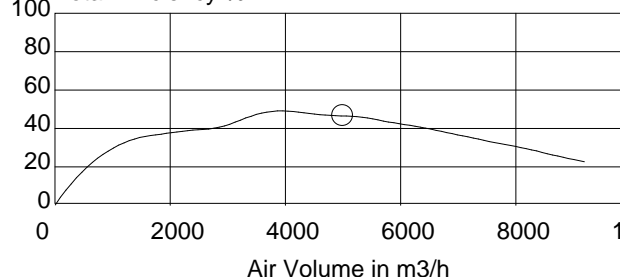
Absorbed Power in kW



1200 Static Pressure in Pa

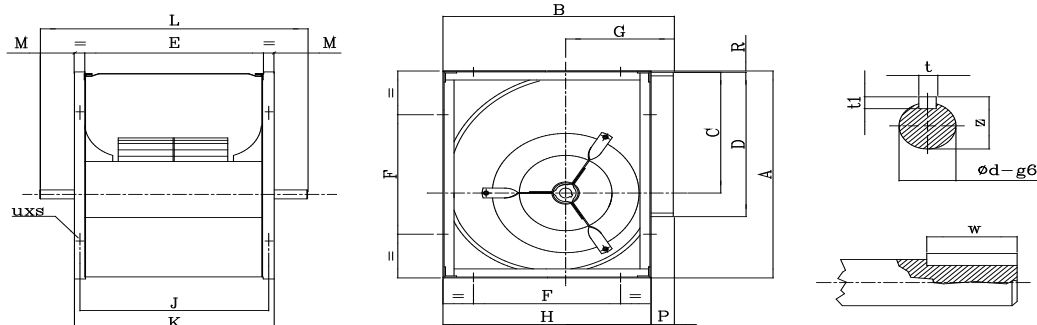


Total Efficiency %



Hz	63	125	250	500	1k	2k	4k	8k	Overall	
Lwi(Lin)	81	84	86	84	82	81	79	77	92	dB
Lwi(A)	56	69	78	81	82	82	80	76	88	dB(A)
Lpi(A)	49	62	71	74	74	75	73	69	81	dB(A)
* Sound data is for the inlet side										
* Sound Pressure Level 1m, Room Conditions										

(CW90)



A	B	C	D	E	F	G	H	J	K	L	M	P	R	t	t1	w	z	Od	UxS					
415	382	243	288	288	224	180	348	313	338	452	57	34	3	6	6	30	22.5	20	11x16					