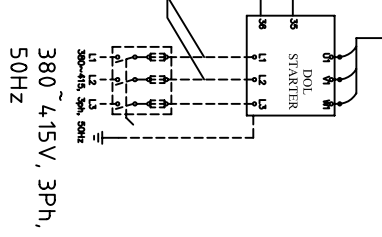
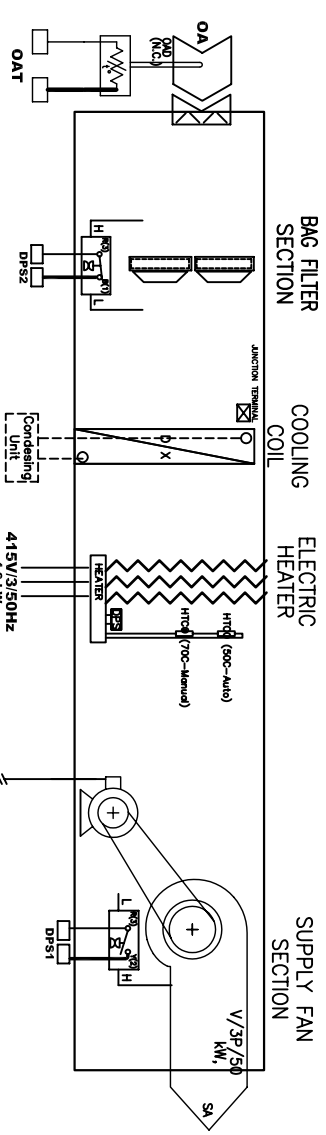
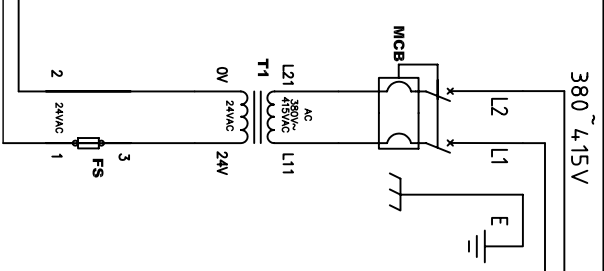
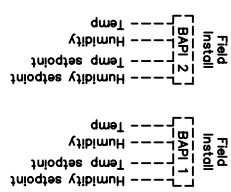
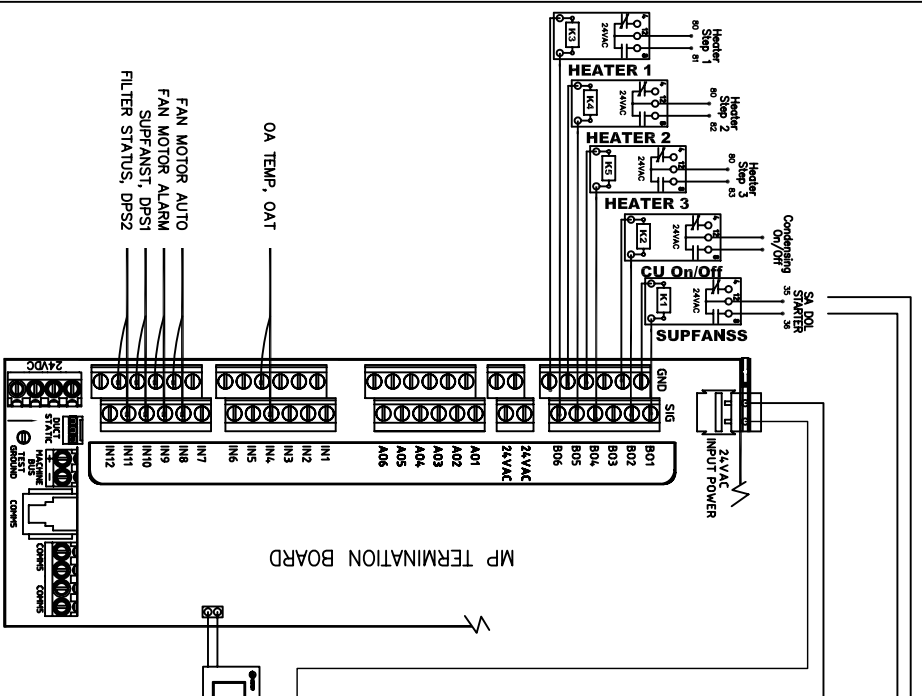
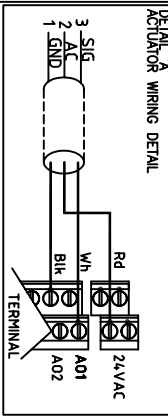


[illegible]

1. DASHED LINES INDICATE RECOMMENDED FIELD WIRING BY OTHERS. DASHED LINES OUTLINES INDICATE COMPONENTS PROVIDED BY THE FIELD. SOLID LINES INDICATES WIRING BY TROOP.
2. USE PLANT RELEAS FOR DRY-CONTACT OUTPUTS AND WHEN THE LOAD CURRENT IS GREATER THAN 1A USE POWERED OUTPUTS WHEN THE LOAD CURRENT IS LESS THAN 1 AMP
3. WIRES MUST NOT EXCEED 300FT. (100M), FOR THERMISTOR INPUT
4. (USE ONLY THE FRAME 5 Via PRESSURE-SENSOR KIT)
5. 2 AMPS. WIRING WITH DISCONNECT MEANS AND OVER LOAD PROTECTION IS PROVIDED
- ALL FIELD WIRING MUST BE IN ACCORDANCE WITH LOCAL REQUIREMENTS.
7. ALL UNIT CONTROL WIRING IS LOW VOLTAGE (30 VOLT MAXIMUM), DO NOT BUNDLE OR ROUTE WITH HIGH VOLTAGE WIRING.
8. FOR INPUT/OUTPUT WIRING USE 18-22 AWG TWISTED PAIR WIRE
9. WIRE DIRECTLY TO A GOOD EARTH GROUND.

LEGENDS	
CA	Conditioned Air
CC	Cooling Coil
CHW	Chilled Water
D	Damper
DA	Discharge Air
DPS	Differential Pressure Switch
DPSE	Differential Pressure Sensor
EA	Exhaust Air
F/F5	Fuse / Fuse Switch
FILST	Filter Status
HE	Heat Exchanger
HICO	High Temperature Cut Out
HW	Hot Water
K	Relay, Control
MA	Mixed Air
MB	Magnetic Circuit Breaker
OA	Outdoor Air
RA	Return Air
SA	Supply Air
SP	Space
SUPFANSS	Supply Fan Start Stop
SUPFANST	Supply Fan Status
T1/TX	Transformer
V	Valve
VFD	Variable Frequency Drive

Project:	ICU LAB
SO no:	70E499
Tag no:	AHU
Motor kW:	0.55kW
Heating kW:	4kW, 3Steps

DRAWN BY :
KT Lee

APPROVAL BY :

TM
Engineering
09 Sep 2011
KT Lee

2D CAD

TRANE™
MALAYSIA

THIS DRAWING IS PROPERTY OF TRANE AND SHALL NOT BE LOANED, REPRODUCED, COPIED, OR IN ANY MANNER DISCLOSED TO OUTSIDE PARTIES WITHOUT THE WRITTEN CONSENT OF THE TRANE COMPANY

SIMILAR TO

FILE NUMBER	DRAWING NUMBER	REV
	70E499-CAY1.DWG	0

**CONSTANT AIR VOLUME
AS BUILT SCHEMATIC WIRING
(COOLING & HEATING)**