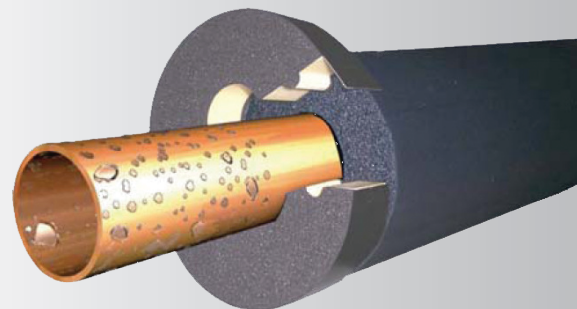


KDR-FIX

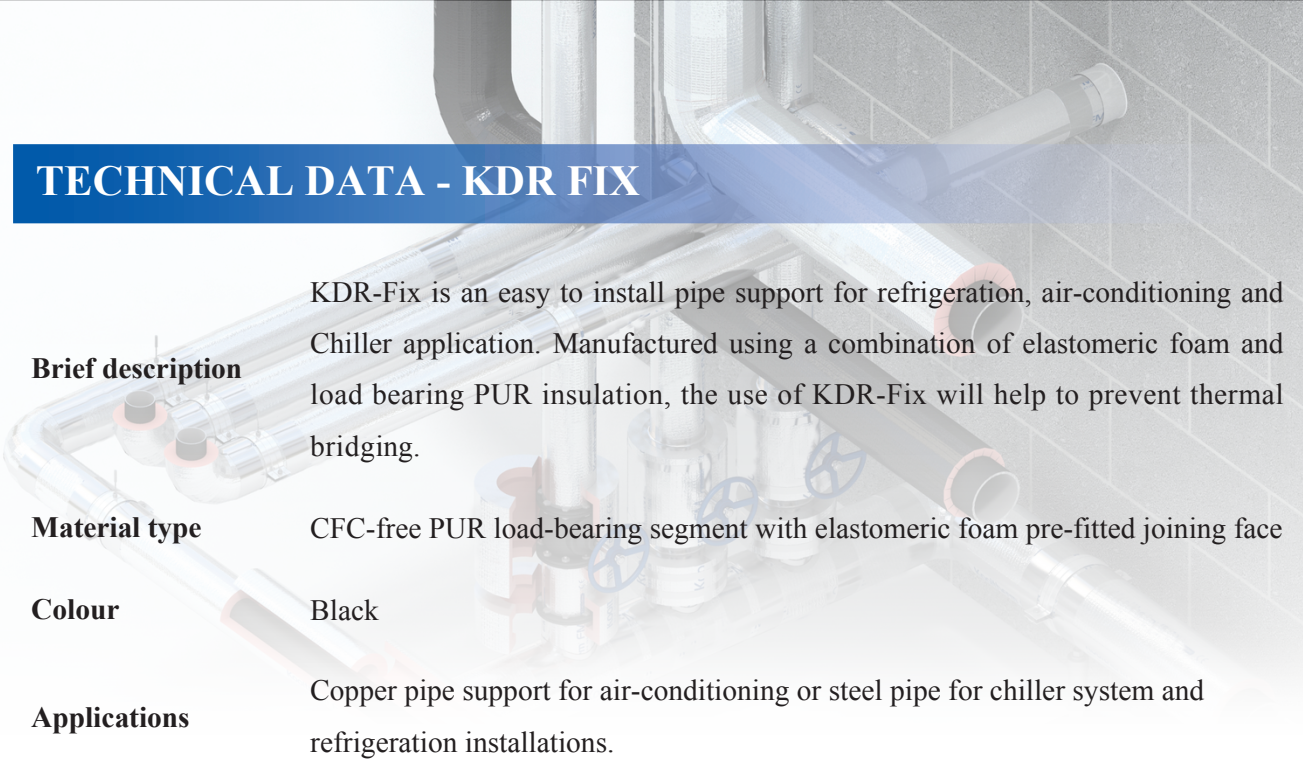
INSULATED PIPE SUPPORT



- * Reliable condensation control
- * Intelligent lock for better installation
- * Easy to install with self-adhesive tape
- * High-strength polyurethane core
- * Low thermal conductivity insulation



TECHNICAL DATA - KDR FIX



Brief description

KDR-Fix is an easy to install pipe support for refrigeration, air-conditioning and Chiller application. Manufactured using a combination of elastomeric foam and load bearing PUR insulation, the use of KDR-Fix will help to prevent thermal bridging.

Material type

CFC-free PUR load-bearing segment with elastomeric foam pre-fitted joining face

Colour

Black

Applications

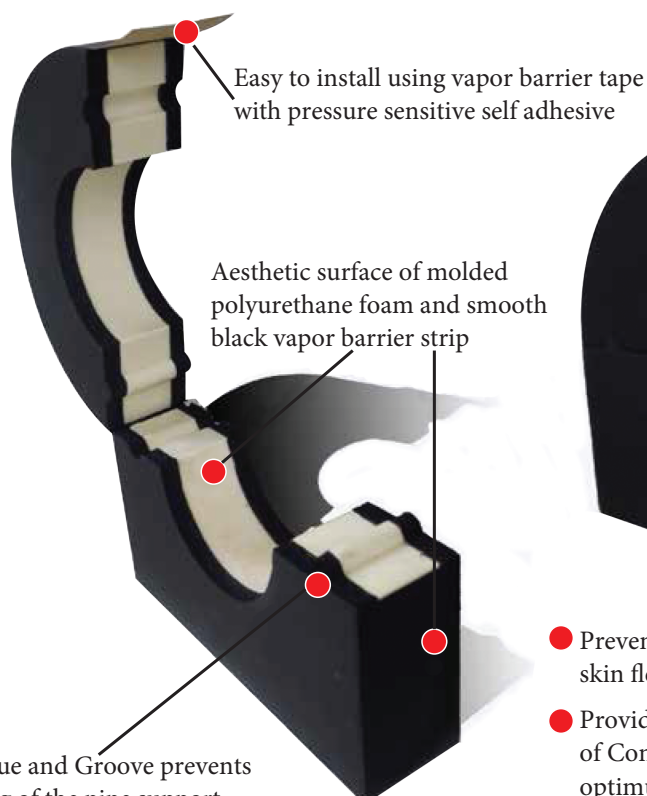
Copper pipe support for air-conditioning or steel pipe for chiller system and refrigeration installations.

Physical Property	Technical Data	Standard Testing
Density	140 ÷ 180 Kg/m³	-
Recommend pipe size	Up to DN600	-
Thermal Conductivity	0.0325 W/(m.K) at 25°C	ASTM C518
Service Temperature	Min: -50 °C ÷ Max: 120 °C	-
Compressive Strength	Perpendicular > 1.33 MPa	ASTM D1621
Water Absorption by Volume.	< 1%	ASTM D209
Close cell content	Min 92%	-
Fire performance	Elastomeric Foam: Class V0 PU Foam: Class HB Self Extinguishing/No Fire dripping	UL 94 ASTM D635
Environmental Aspect	Non CFC / HCFC material	-

** All data and technical information are based on results achieved under typical application conditions. Recipients of this information should, in their own interest and responsibility, clarify with us in due time whether or not the data and information apply to the intended application area.*

COMPARATIVE TABLES WITH OTHER MATERIALS

Physical Property	KDR-Fix (Moulded foam)	Wood block	Phenolic foam	PVC pipe Half cut	PU (Sliced foam)
Material	Closed Cell PU foam	Hard wood	Phenolic foam	PVC injection	Semi open cell PU foam
Condensation control	Very good	Poor	Poor	Poor	Medium
Density	120÷160 Kg/m ³	400÷800 Kg/m ³	80÷160 Kg/m ³	1400 Kg/m ³	150÷250 Kg/m ³
Thermal Conductivity at 0°C	0.021 W/m.K	0.17 W/m.K	0.6 W/m.K	0.15 W/m.K	0.28 W/m.K
Compressive Strength	15 – 20 Kg/cm ²	100 – 1,000 Kg/cm ²	Easy to crack	550 – 890 Kg/cm ²	Too stiff and more likely to crack
Fire performane	Self extinguish	Flamamable	Self extinguish	Melt & Drip	Self extinguish
Service Temp	-50 to 120°C	0 to 120°C	-180 to 125°C	< 60°C	-50 to 120°C
Installation	Easy & Fast	Difficult & Slow	Easy & Fast	Difficult & Slow	Easy & Fast



Flat bottom ensures that pipe support stay stationary and devoid to vibration

- Prevent vapor intrusion with dense skin flexible elastomeric foam
- Providing High performance of Condensation control with optimum density design
- Spacing and compressive strength of the foam complies with the MSS - SP69 standard

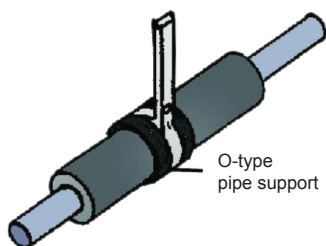
PRODUCT RANGE



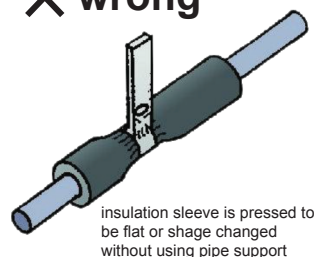
KDR-Fix, Round type pipe support insulation

No.	Steel	Copper	Pipe max. Outside-Ø	Length	Thickness (mm)				
	In. (mm)	In. (mm)	(mm)	(mm)	19 mm	25 mm	32 mm	40 mm	50 mm
1	-	3/8" (10)	10	50	KFO-19×010S	-	-	-	-
2	-	1/2" (12)	12	50	KFO-19×012S	-	-	-	-
3	-	5/8" (15)	15	50	KFO-19×015S	KFO-25×015S	-		
4	-	3/4" (20)	20	50	KFO-19×020S	KFO-25×020S	KFO-32×020S	KFO-40×020S	KFO-50×020S
5	1/2" (15)	7/8" (22)	22	50	KFO-19×022S	KFO-25×022S	KFO-32×022S	KFO-40×022S	KFO-50×022S
6	3/4" (20)	1-1/8" (28)	28	50	KFO-19×028S	KFO-25×028S	KFO-32×028S	KFO-40×028S	KFO-50×028S
7	1" (25)	1-1/8" (28)	35	50	KFO-19×035S	KFO-25×035S	KFO-32×035S	KFO-40×035S	KFO-50×035S
8	1-1/4" (32)	1-5/8" (42)	42	50	KFO-19×042S	KFO-25×042S	KFO-32×042S	KFO-40×042S	KFO-50×042S
9	1-1/2" (40)	-	48	50	KFO-19×048S	KFO-25×048S	KFO-32×048S	KFO-40×048S	KFO-50×048S
10	-	2-1/8" (54)	54	50	KFO-19×054S	KFO-25×054S	KFO-32×054S	KFO-40×054S	KFO-50×054S
11	2" (50)	-	60	50	KFO-19×060S	KFO-25×060S	KFO-32×060S	KFO-40×060S	KFO-50×060S
12	-	2-5/8" (67)	67	50	KFO-19×067S	KFO-25×067S	KFO-32×067S	KFO-40×067S	KFO-50×067S
13	-	-	73	50	KFO-19×073S	KFO-25×073S	KFO-32×073S	KFO-40×073S	KFO-50×073S
14	2-1/2" (65)	-	76	50	KFO-19×076S	KFO-25×076S	KFO-32×076S	KFO-40×076S	KFO-50×076S
15	3" (80)	-	89	50	KFO-19×089S	KFO-25×089S	KFO-32×089S	KFO-40×089S	KFO-50×089S
16	4" (100)	-	114	50	KFO-19×114S	KFO-25×114S	KFO-32×114S	KFO-40×114S	KFO-50×114S
17	5" (125)	-	140	50	KFO-19×140S	KFO-25×140S	KFO-32×140S	KFO-40×140S	KFO-50×140S
18	6" (150)	-	168	50	KFO-19×168S	KFO-25×168S	KFO-32×168S	KFO-40×168S	KFO-50×168S
19	8" (200)	-	219	100	KFO-19×219M	KFO-25×219M	KFO-32×219M	KFO-40×219M	KFO-50×219M
20	10" (250)	-	273	100	KFO-19×273M	KFO-25×273M	KFO-32×273M	KFO-40×273M	KFO-50×273M
21	12" (300)	-	324	100	KFO-19×324M	KFO-25×324M	KFO-32×324M	KFO-40×324M	KFO-50×324M
22	14" (350)	-	355	150	KFO-19×355L	KFO-25×355L	KFO-32×355L	KFO-40×355L	KFO-50×355L
23	16" (400)	-	406	150	KFO-19×406L	KFO-25×406L	KFO-32×406L	KFO-40×406L	KFO-50×406L
24	18" (450)	-	457	150	KFO-19×457L	KFO-25×457L	KFO-32×457L	KFO-40×457L	KFO-50×457L
25	20" (500)	-	510	150	KFO-19×510L	KFO-25×510L	KFO-32×510L	KFO-40×510L	KFO-50×510L
26	24" (600)	-	609	150	KFO-19×609L	KFO-25×609L	KFO-32×609L	KFO-40×609L	KFO-50×609L

○ **CORRECT**



✗ **wrong**



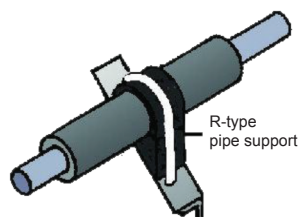
PRODUCT RANGE



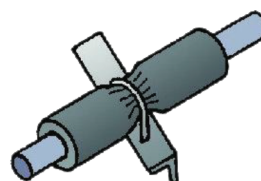
KDR-Fix, Saddle type pipe support insulation

No.	Steel	Copper	Pipe max. Outside-Ø	Length	Thickness (mm)				
	In. (mm)	In. (mm)	(mm)	(mm)	19 mm	25 mm	32 mm	40 mm	50 mm
1	-	3/8" (10)	10	50	KFS-19×010S	-	-	-	-
2	-	1/2" (12)	12	50	KFS-19×012S	-	-	-	-
3	-	5/8" (15)	15	50	KFS-19×015S	KFS-25×015S	-	-	-
4	-	3/4" (20)	20	50	KFS-19×020S	KFS-25×020S	KFS-32×020S	KFS-40×020S	KFS-50×020S
5	1/2" (15)	7/8" (22)	22	50	KFS-19×022S	KFS-25×022S	KFS-32×022S	KFS-40×022S	KFS-50×022S
6	3/4" (20)	1-1/8" (28)	28	50	KFS-19×028S	KFS-25×028S	KFS-32×028S	KFS-40×028S	KFS-50×028S
7	1" (25)	1-3/8" (35)	35	50	KFS-19×035S	KFS-25×035S	KFS-32×035S	KFS-40×035S	KFS-50×035S
8	1-1/4" (32)	1-5/8" (42)	42	50	KFS-19×042S	KFS-25×042S	KFS-32×042S	KFS-40×042S	KFS-50×042S
9	1-1/2" (40)	-	48	50	KFS-19×048S	KFS-25×048S	KFS-32×048S	KFS-40×048S	KFS-50×048S
10	-	2-1/8" (54)	54	50	KFS-19×054S	KFS-25×054S	KFS-32×054S	KFS-40×054S	KFS-50×054S
11	2" (50)	-	60	50	KFS-19×060S	KFS-25×060S	KFS-32×060S	KFS-40×060S	KFS-50×060S
12	-	2-5/8" (67)	67	50	KFS-19×067S	KFS-25×067S	KFS-32×067S	KFS-40×067S	KFS-50×067S
13	-	-	73	50	KFS-19×073S	KFS-25×073S	KFS-32×073S	KFS-40×073S	KFS-50×073S
14	2-1/2" (65)	-	76	50	KFS-19×076S	KFS-25×076S	KFS-32×076S	KFS-40×076S	KFS-50×076S
15	3" (80)	-	89	50	KFS-19×089S	KFS-25×089S	KFS-32×089S	KFS-40×089S	KFS-50×089S
16	4" (100)	-	114	50	KFS-19×114S	KFS-25×114S	KFS-32×114S	KFS-40×114S	KFS-50×114S
17	5" (125)	-	140	50	KFS-19×140S	KFS-25×140S	KFS-32×140S	KFS-40×140S	KFS-50×140S
18	6" (150)	-	168	50	KFS-19×168S	KFS-25×168S	KFS-32×168S	KFS-40×168S	KFS-50×168S
19	8" (200)	-	219	100	KFS-19×219M	KFS-25×219M	KFS-32×219M	KFS-40×219M	KFS-50×219M
20	10" (250)	-	273	100	KFS-19×273M	KFS-25×273M	KFS-32×273M	KFS-40×273M	KFS-50×273M
21	12" (300)	-	324	100	KFS-19×324M	KFS-25×324M	KFS-32×324M	KFS-40×324M	KFS-50×324M
22	14" (350)	-	355	150	KFS-19×355L	KFS-25×355L	KFS-32×355L	KFS-40×355L	KFS-50×355L
23	16" (400)	-	406	150	KFS-19×406L	KFS-25×406L	KFS-32×406L	KFS-40×406L	KFS-50×406L
24	18" (450)	-	457	150	KFS-19×457L	KFS-25×457L	KFS-32×457L	KFS-40×457L	KFS-50×457L
25	20" (500)	-	510	150	KFS-19×510L	KFS-25×510L	KFS-32×510L	KFS-40×510L	KFS-50×510L
26	24" (600)	-	609	150	KFS-19×609L	KFS-25×609L	KFS-32×609L	KFS-40×609L	KFS-50×609L

○ **CORRECT**



✗ **wrong**

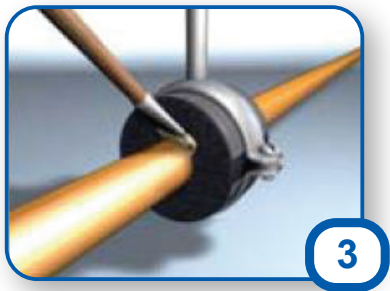
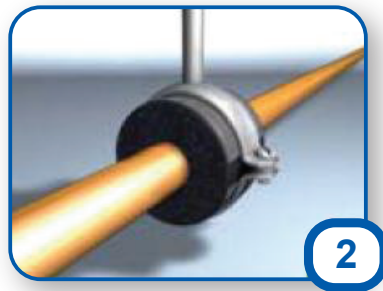
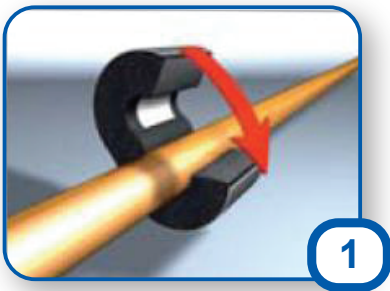


insulation sleeve is pressed to be flat without using pipe support

RECOMMENDED HANGER/SUPPORT SPACING

Steel pipe		KDR-Fix		Wt. per m		Hanger/Support spacing for standard steel pipe	
Nominal Size		Outside Diameter	Inner Dia	Empty pipe	Fully Flooded	Water	Steam
[Inches]	[mm]	[mm]	[mm]	[Kg]	[Kg]	[m]	[m]
1/2"	15	22	22	1.28	1.44	2	2
3/4"	20	28	28	1.67	2.03	2	3
1"	25	35	35	2.49	3.05	2	3
1-1/4"	32	42	42	3.38	4.33	2	3
1-1/2"	40	48	48	4.04	5.35	3	4
2"	50	60	60	5.45	7.61	3	4
2-1/2"	65	76	76	8.63	11.71	3	4
3"	80	89	89	11.29	16.08	4	5
4"	100	114	114	16.08	24.25	4	5
5"	125	140	140	21.72	34.68	5	6
6"	150	168	168	28.12	46.88	5	6
8"	200	219	219	42.55	74.87	6	7
10"	250	273	273	60.27	111.15	6	7
12"	300	324	324	79.63	152.10	6	7
14"	350	355	355	94.36	181.86	6	7
16"	400	406	406	123.23	237.37	6	7
18"	450	457	457	155.81	300.30	6	7
20"	500	510	510	183.20	362.96	6	7
24"	600	610	610	200.88	483.48	6	7

Installation of KDR-Fix



NOTE

.....

.....

.....

.....

.....

.....

.....

.....

.....

.....

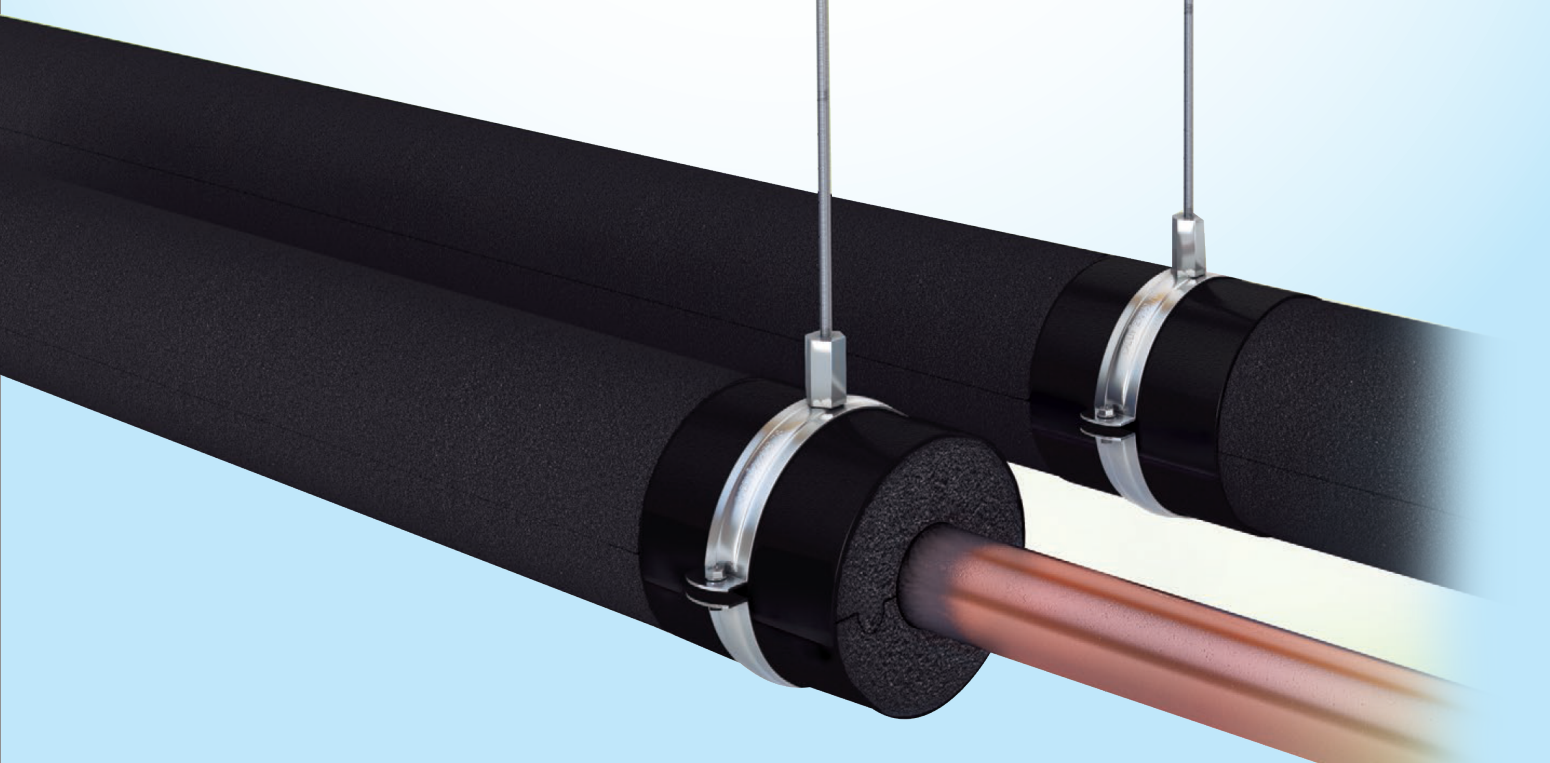
.....

.....

.....

.....

.....



KDR-FIX



KIM DIEN REFRIGERATION CO., LTD

Add: No. 119, Nguyen Ngoc Nai Str., Thanh Xuan Dist., Hanoi, Vietnam

Factory add: Quynh Phuc Industrial Park, Kim Thanh Dist., Hai Duong Pro., Vietnam

Tel: (+84) 24 3221 6236 Fax: (+84) 24 3576 5728

www.kimdienvn.com - info@kimdienvn.com