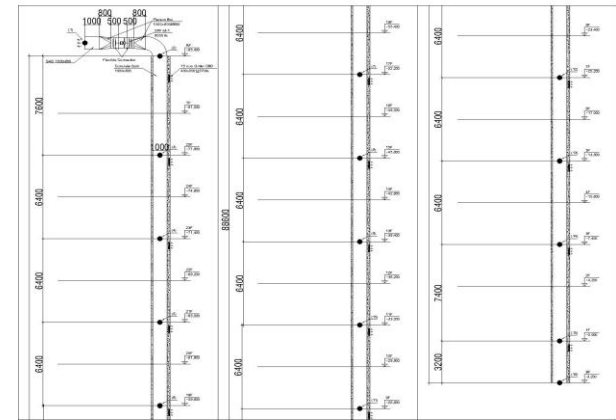


CALCULATE FOR STATIC PRESSURE OF FAN:

Location: *Block R8A, use for Pressurization System*

Name: *SPF-M-1*



Section	Item	Qty	Flow (l/s)		Main Size				Branch Size				l (m)	v (m/s)	P _v (Pa)	Duct P.loss (Pa/m)	Fitting P.loss (Pa)	P _{ms} (Pa)	P _s (Pa)
			Main	Branch	W(mm)	H(mm)	d _{td} (mm)	S _{td} (m ²)	W(mm)	H(mm)	d _{td} (mm)	S _{td} (m ²)							
1-2	Duct	1.00	9,000.00		1,000.00	600.00	830.00	0.60				-	1.00	15.00	135.00	7.50		7.50	7.50
	Plenum	2.00	9,000.00		1,000.00	600.00	830.00	0.60				-	0.80	15.00	135.00		21.00	-	42.00
	Flexible	2.00	9,000.00		1,000.00	600.00	830.00	0.60				-	0.50	15.00	135.00	3.00		1.50	3.00
	Elbow	1.00	9,000.00		1,000.00	600.00	830.00	0.60				-		15.00	135.00		162.00	-	162.00
2-3	Concrete	1.00	9,000.00		1,000.00	600.00	830.00	0.60				-	7.60	15.00	135.00	3.00		22.80	22.80
	Entry Branch 45°, main	1.00	9,000.00	570.00	1,000.00	600.00	830.00	0.60	400.00	550.00	511.00	0.22		15.00	135.00		8.00	-	8.00
3-4	Concrete	1.00	8,430.00		1,000.00	600.00	830.00	0.60				-	6.40	14.05	118.44	3.00		19.20	19.20
	Entry Branch 45°, main	1.00	8,430.00	570.00	1,000.00	600.00	830.00	0.60	400.00	550.00	511.00	0.22		14.05	118.44		8.00	-	8.00
4-5	Concrete	1.00	7,860.00		1,000.00	600.00	830.00	0.60				-	6.40	13.10	102.97	3.00		19.20	19.20
	Entry Branch 45°, main	1.00	7,860.00	570.00	1,000.00	600.00	830.00	0.60	400.00	550.00	511.00	0.22		13.10	102.97		7.00	-	7.00
5-6	Concrete	1.00	7,290.00		1,000.00	600.00	830.00	0.60				-	6.40	12.15	88.57	3.00		19.20	19.20
	Entry Branch 45°, main	1.00	7,290.00	570.00	1,000.00	600.00	830.00	0.60	400.00	550.00	511.00	0.22		12.15	88.57		6.00	-	6.00
6-7	Concrete	1.00	6,720.00		1,000.00	600.00	830.00	0.60				-	6.40	11.20	75.26	3.00		19.20	19.20
	Entry Branch 45°, main	1.00	6,720.00	570.00	1,000.00	600.00	830.00	0.60	400.00	550.00	511.00	0.22		11.20	75.26		6.00	-	6.00
7-8	Concrete	1.00	6,150.00		1,000.00	600.00	830.00	0.60				-	6.40	10.25	63.04	3.00		19.20	19.20
	Entry Branch 45°, main	1.00	6,150.00	570.00	1,000.00	600.00	830.00	0.60	400.00	550.00	511.00	0.22		10.25	63.04		5.00	-	5.00
8-9	Concrete	1.00	5,580.00		1,000.00	600.00	830.00	0.60				-	6.40	9.30	51.89	3.00		19.20	19.20
	Entry Branch 45°, main	1.00	5,580.00	570.00	1,000.00	600.00	830.00	0.60	400.00	550.00	511.00	0.22		9.30	51.89		5.00	-	5.00
9-10	Concrete	1.00	5,010.00		1,000.00	600.00	830.00	0.60				-	6.40	8.35	41.83	3.00		19.20	19.20
	Entry Branch 45°, main	1.00	5,010.00	570.00	1,000.00	600.00	830.00	0.60	400.00	550.00	511.00	0.22		8.35	41.83		5.00	-	5.00
10-11	Concrete	1.00	4,440.00		1,000.00	600.00	830.00	0.60				-	6.40	7.40	32.86	3.00		19.20	19.20
	Entry Branch 45°, main	1.00	4,440.00	570.00	1,000.00	600.00	830.00	0.60	400.00	550.00	511.00	0.22		7.40	32.86		5.00	-	5.00
11-12	Concrete	1.00	3,870.00		1,000.00	600.00	830.00	0.60				-	6.40	6.45	24.96	3.00		19.20	19.20
	Entry Branch 45°, main	1.00	3,870.00	570.00	1,000.00	600.00	830.00	0.60	400.00	550.00	511.00	0.22		6.45	24.96		4.00	-	4.00
12-13	Concrete	1.00	3,300.00		1,000.00	600.00	830.00	0.60				-	6.40	5.50	18.15	3.00		19.20	19.20
	Entry Branch 45°, main	1.00	3,300.00	570.00	1,000.00	600.00	830.00	0.60	400.00	550.00	511.00	0.22		5.50	18.15		4.00	-	4.00
13-14	Concrete	1.00	2,730.00		1,000.00	600.00	830.00	0.60				-	6.40	4.55	12.42	3.00		19.20	19.20
	Entry Branch 45°, main	1.00	2,730.00	570.00	1,000.00	600.00	830.00	0.60	400.00	550.00	511.00	0.22		4.55	12.42		4.00	-	4.00
14-15	Concrete	1.00	2,160.00		1,000.00	600.00	830.00	0.60				-	6.40	3.60	7.78	3.00		19.20	19.20

[illegible]

